



Visualize the data in your PaperCut print management systems

# Intuitive Dashboards for PaperCut MF

Intuitive for PaperCut MF is a pre-integrated BI solution designed specifically for PaperCut. Visualize the data in your PaperCut print management system. Manage costs, risks and environmental impact.

Intuitive for PaperCut is a pre-integrated BI solution designed specifically for PaperCut MF.

Delivered with a complete set of standard configurations implemented in hours not weeks. Monthly reports for different budget holders are automated and personalized with no effort. The visual dashboards identify where you can improve the efficiency of your print infrastructure.

## Benefits

Five key benefits of PaperCut dashboards.

- 1. Instantly produce** role-based dashboards with no manual effort.
- 2. Drill from a high-level overview** straight to detailed analysis with our pre-built views.
- 3. Quickly identify** high volume users, groups and departments to manage costs.
- 4. Improve the efficiency** of your print estate - easily identify under and over-utilized printers.
- 5. Highlight areas** for digital transformation with pre-built trend analysis.

# Intuitive Dashboards for PaperCut MF

## Executive Summary

- Top 20 users & Printers, number of users, total pages, number of printers.
- Rank users to see who has the most pages printed, scanned and copied.
- See your printers with the most pages printed, indicating that they may be overused.
- Drill into top printed documents so you can identify hotspots of printing behavior.



## Cost Analysis

- costs over time, by department, user, mono vs color, print vs. copy.
- Average user cost by department.
- Rank departments by % color pages printed and see their % weight in total printing costs.
- Understand which departments printing jobs you need to analyze, which may lead to finding areas for digitization.

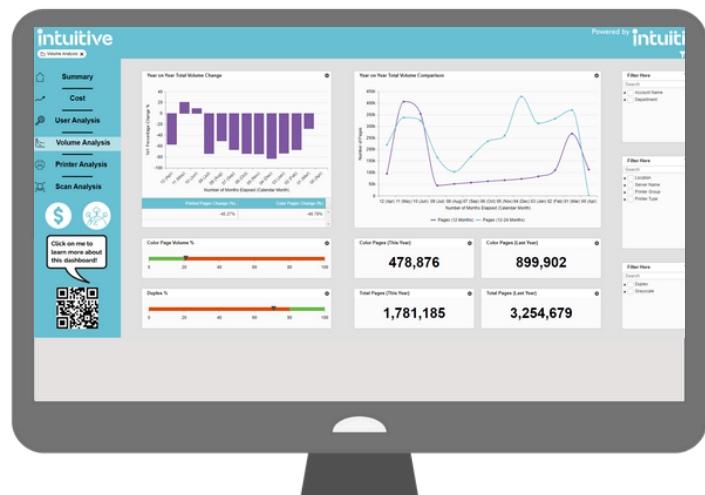
## User Analysis

- See a breakdown of print usage by user, including total pages printed and color vs mono printing.
- Compare print activity for different offices within the same department.
- Compare users and their % color printed and total individual print costs.
- Identify individuals whose print activity needs to be monitored and who require printing restrictions.



## Volume analysis

- See the print / scan / copy volume change (this year vs last year).
- Filter by departments to identify trends in department print/scan/copy volume.
- Compare color print volume this year vs last year.
- Identify whether changes to print habits have been implemented and the effect they have had on your business over the last year.



# Intuitive Dashboards for PaperCut MF

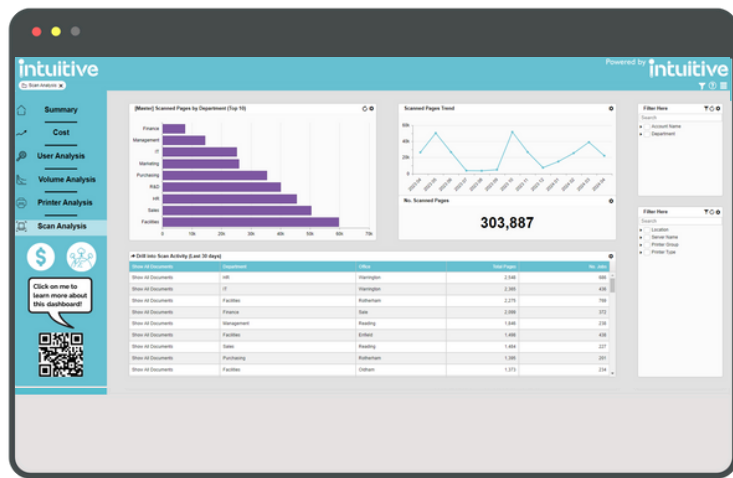
## Printer Analysis

- See an overview of your print estate, including number of printers, and average pages printed per printer.
- See device utilization by location, compare the average printed pages per printer to the devices actual use (variance).
- Identify which devices are over and under utilized.
- Spot areas to optimize your print estate based on device utilization at each location.



## Scan Analysis

- See your top 10 departments for scan activity.
- See your overall scan activity in the last 30 days.
- Filter through to each department to find common scan trends.
- Understand scan trends across departments to spot areas for workflow automation and digitization.



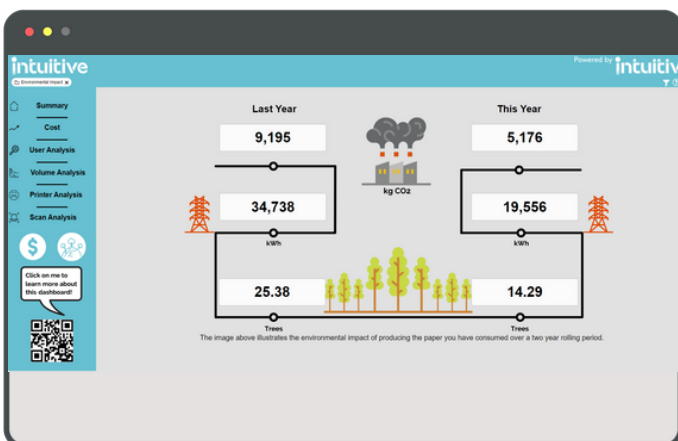
## Cost and Volume Analysis

- Impact of printing volumes and costs over two-year rolling period, split of color pages, total pages and cost.
- Compare last years print volume and costs to your current year.
- Understand how changes to printing habits over a year has impacted your business.
- see the impact of your print analysis over the last year.

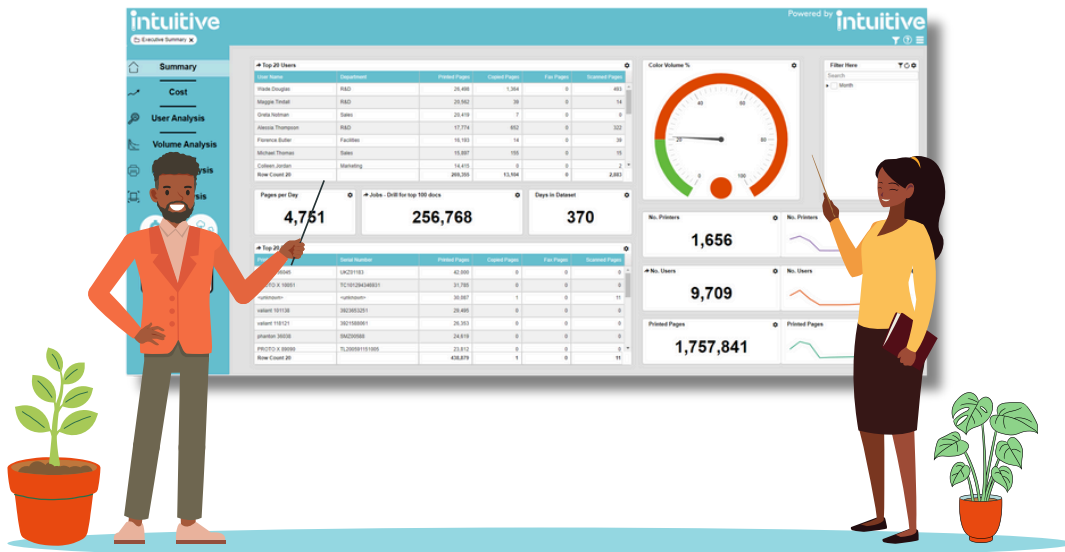


## Environmental Impact

- Environmental impact of printing (CO2, energy, trees consumed) by department over a two-year rolling period.
- Compare your previous years Co2 emissions, energy used for printing in KWh and number of trees used to your current year.
- See how your print analysis and changes to printing habits have impacted the environment.
- See if you have reached your environmental targets and use data to set new ones.



# intuitive



## Cost Management

- See where print demand is coming from (user, print groups, and device).
- View the latest available usage data for your multi-function devices, giving you shorter & more effective decision cycles.
- Automate and personalize monthly reporting for different budget holders.
- Identify opportunities to improve the efficiency of your print management infrastructure.

## Quick and Personalized Analysis

- Intuitive for **PaperCut MF** allows you to view data from the entire organization through a detailed overview or with filtered views for deeper analysis into data of interest.

## ACDI + intuitive

Intuitive dashboards for **PaperCut MF** provide a series of tailored dashboards presenting PaperCut reporting data in a visual, accessible and drillable format. Using the **PaperCut MF V20+** Data Integration feature, users can launch Intuitive from the Data Integration tab within **PaperCut MF**, without having to switch applications.

