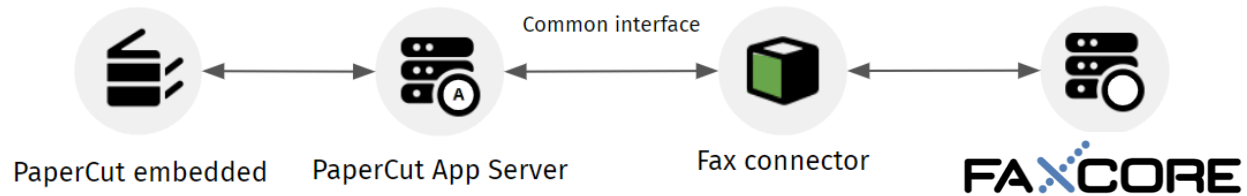


# FaxCore Connector by ACDI

## Overview

FaxCore Connector application and license works with PaperCut MFs Scan to Fax API-based connection to provide more secure and advanced functionality.



## Requirements

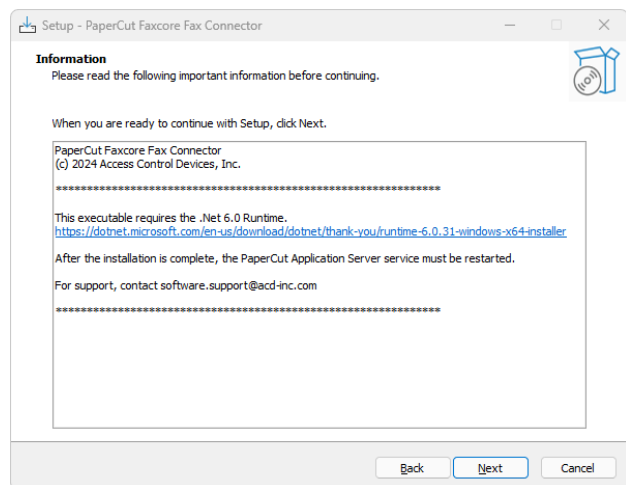
- FaxCore Domain Admin Account
- PaperCut MF server for Windows (version 21.2 and above)
- MFD that provides Scan to Fax Functionality ([current list](#))
- Advanced Fax Connector License for each MFD
- FaxCore Connector Packs to cover number of devices that will connect to FaxCore
- .net Runtime 6.0 installed on the PaperCut server

## Compatible MFDS (as of 12/15/2023)

Konica Minolta (Open API4.0+), Toshiba V3+, Sharp OSA n2, Xerox, Canon MEAP, HP OXP, Ricoh SmartSDK

## Install FaxCore connector by ACDI

1. Download the FaxCore connector and write down the authorization license sent to you by ACDI.
2. Make sure you are logged into the PaperCut application server as an admin that can install applications.
3. Run the FaxCore connector installer.
4. Installer will walk you through confirming that all prerequisites are met for the application and install any necessary components.
5. When install is complete PaperCut application service must be restarted to enable the FaxCore connector option within PaperCut.



## How to Generate or Show API Key

This tutorial shows how to generate or reveal an account's API key from the FaxCore Client Portal.

### Prerequisites

- A domain admin account with portal access with the ability to create users.
- Note: Changing the API Key can cause authorization issues

### Instructions

How to generate, show or reset the account API key

1. Sign into the FaxCore portal.
2. Click on the user icon, then **Admin Panel**.
3. Under **Domain Management**, go to Users, then click the + sign to create a new user.
  - a. The user must have **Domain Admin** rights to access the FaxCore API.
4. After the user has been created, click **API Keys** in the upper right:

Domain Management > Users > Edit Entry

Save Reset Back

User Profile General Settings Fax Settings Permission SMTP Relay Delegation

Click to lock account API Keys

\* User Name: API\_USER

User Role: Domain Admin

\* Primary Address: [Redacted]

Authentication Type: Internal

Is Active:  Yes

Enable 2FA:  No

5. Make a note of the **Client ID** and **Secret Key**:

API Keys

\* Client ID: [Redacted]

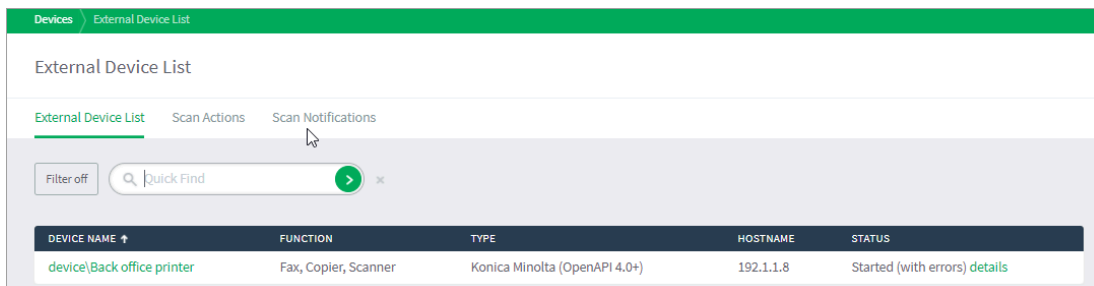
\* Secret Key: [Redacted]

Show Key

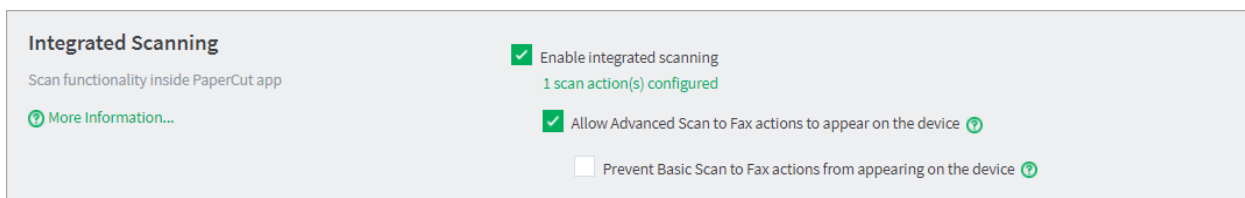
Generate Secret Key

## Enable Advanced Scan to Fax actions

1. Navigate to Devices > External Device List.



2. Select the device you want to set up for Advanced Scan to Fax. The Device Details: <device name> page is displayed.
3. Scroll down to the **Integrated Scanning** section.



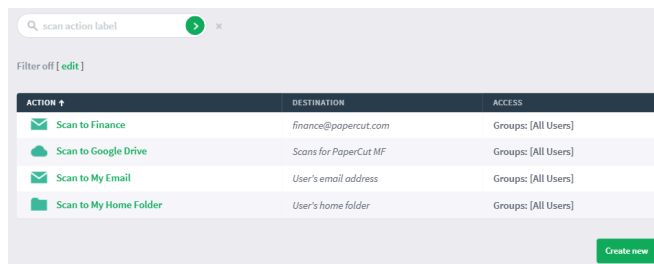
4. Click Allow Advanced Scan to Fax actions to appear on the device.
5. If you don't want the basic scan actions available on the MFD, click **Prevent Basic Scan to Fax actions from appearing on the device**.

## Creating a Fax Connection in PaperCut

### Step 1: Set up the scan actions

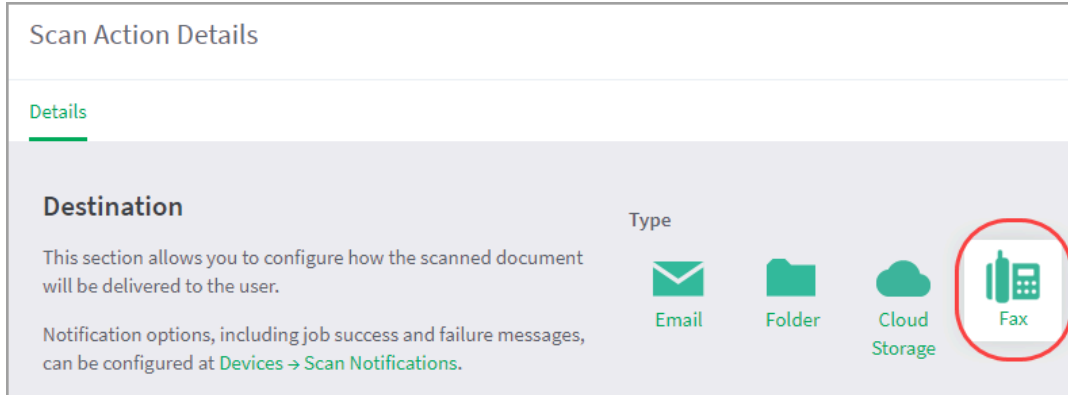
You can create any number of scan actions to meet your needs.

1. Select **Devices > Scan Actions**. The **Scan Actions** page is displayed with a list of all available scan actions.
2. In the **Actions** menu, click **Create new**. The **Scan Action Details** page is displayed.

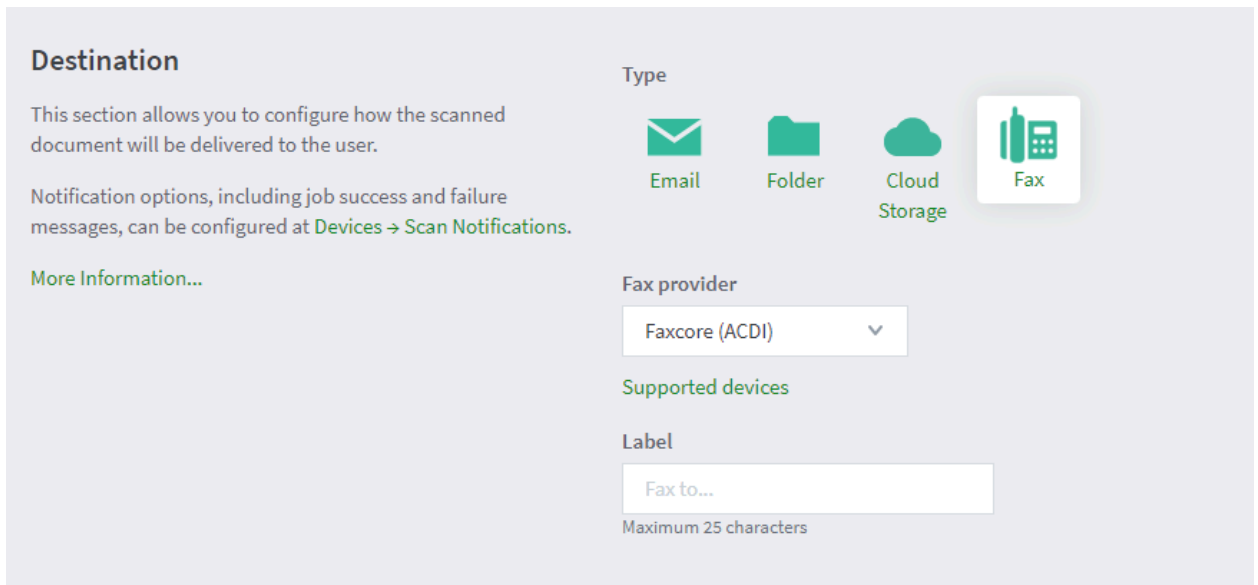


### Delivery via FaxCore connector

1. Select **Devices > scan actions**.
2. In the **Actions** menu, click **Create new**. The Scan Action Details page is displayed.
3. In the **Destination** section, select click **Fax**.



4. Complete the following fields:
5. **Fax provider**—Select your fax provider
6. **Label**—Enter a name for the scan action (maximum 25 characters). This label is displayed to the user on the device.



7. Complete the **Fax settings** area with the API credentials (Client ID and Secret Key) from the earlier step, Customer Name and Activation Key from Activation Email from ACDI.
8. Complete the API Endpoint with the address of your local or cloud hosted FaxCore instance.

**Fax settings**

Fax server settings specify the parameters needed to connect to the fax provider. These settings can change depending on the selected fax provider.

Fax server connection: To apply and test, click 'Test fax connection'

**Test fax connection**

Fax server settings

Customer Name  
ACDI

Activation Key  
[Empty field]

API Endpoint  
https://fax2u.net/

Client ID  
[Masked field]

Client Secret  
[Masked field]

9.

10. In the **How users select the recipient at the device** section:

11. If you are setting up a fixed recipient, select **Fixed recipient** and complete the following fields:

- **Fax number**—The fax number of the recipient.
- **Recipient name**—The name of the recipient. This information will appear on the fax cover sheet, depending on your cover page configuration. Optionally, you can make this field non-editable.
- **Recipient company name**—The company name of the recipient. This information will appear on the fax cover sheet, depending on your cover page configuration. Optionally, you can make this field non-editable.

**How users select the recipient at the device**

Fixed recipient

Fax number  
6171111111

Recipient name  
John Brown  User can edit

Recipient company name  
Dorevitch Pathology, Camberwell  User can edit

Users can specify the recipient

- If you want to let the users enter the fax number at the MFD, select **Users can specify the recipient**.

**How users select the recipient at the device**

- Fixed recipient
- Users can specify the recipient

Details **Access**

### Access List

Enable access to this scan action for users and groups.

**Groups**

[All Users]

**Users**

No users selected

Step 2: Configure the capture settings

1. Click **Options > Capture**. The Capture screen is displayed.

**Capture**

General Job Ticketing **Capture** Notifications User/Group Sync Admin Rights Backups Tools Advanced

**Capture**

Capture covers all forms of scanning and document enhancement. These settings apply to Integrated Scanning for your entire organization.

[More Information...](#)

**Document Processing**

Document Processing is a collection of features to enhance and automate scanning. It includes OCR (Optical Character Recognition), Blank Scanning and Blank Page Removal (configured per Scan Action), and Deskew and Denoise global settings.

All of these operations are performed by the Document Processing service, hosted within PaperCut MF Cloud Services or on your own infrastructure.

Each Document Processing operation uses additional processing power, so if you choose to self-host be sure to install on one or more high performing servers. Or, choose cloud hosting to benefit from automatic updates and real-time testing.

[More Information...](#)

These settings enhance the image quality of scanned documents, and help improve the accuracy of OCR when enabled. They apply globally to all new and existing scan actions.

Up to ten languages can be detected when creating text-searchable documents with OCR.

We recommend choosing a maximum of four languages for best performance, as each additional language increases the processing time.

**Hosting Configuration**

- Use PaperCut MF Cloud Services for Document Processing (default)
- Use Self-Hosted Document Processing (requires additional setup)

Deskew to remove pinstripe for sharper images

Deskew to straighten crooked pages by up to 45 degrees

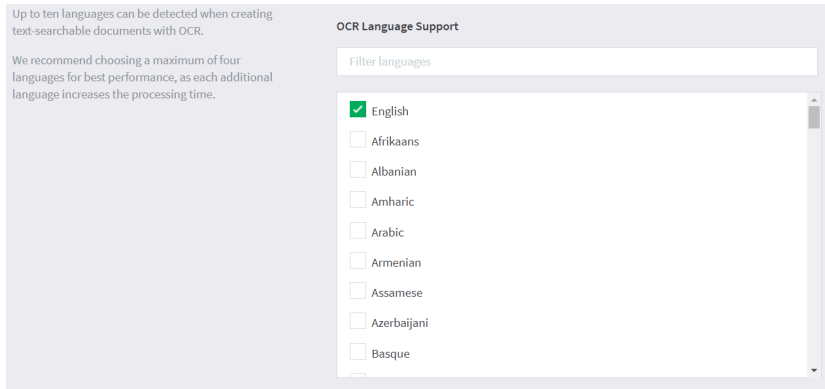
**OCR Language Support**

Filter languages

- English
- Afrikaans
- Albanian
- Amharic
- Arabic
- Armenian
- Assamese
- Azerbaijani
- Basque

PaperCut MF 19.2.1 (06/06/2024) 11:10  
 © Copyright 1999-2025, PaperCut Software International Pty Ltd. All rights reserved.  
 PaperCut self-host license, 0 days remaining

1. In the **Document Processing** section, you can configure the optional **Despeckle** and **Deskew** settings. These settings apply to all new and existing scan actions:
  - Despeckle
  - Deskew
2. Select up to 10 languages you want OCR to detect and process in your scans.



3. Click **Apply**.

### Step 3: Enable Integrated Scanning for a device

For each scanning device, you must enable Integrated Scanning.

1. In the Admin web interface, click the **Devices** tab.  
The **External Device List** page is displayed.
2. Select a device.  
The **Device Details** page is displayed.
3. In the **Integrated Scanning** area, select the **Enable Integrated Scanning** check box.
4. Click **OK**. For all scan actions except Scan to Fax, integrated scanning is now set up and you have finished the basic configuration.

## Fax Status Notification

PaperCut will send the Fax data on to FaxCore and the system will show that the fax was successfully delivered to the FaxCore network. If the fax fails to deliver, you will receive an email with the scanned document and error notification, similar to below:

Transaction Error: [REDACTED] Message # 1297472 Fax2u.net ▷ Inbox x

notifier@faxcore.com

to me ▾

### Delivery Information:

Message #: 1297472

Recipient Name: [REDACTED]

Recipient Company:

Error Code: 6

Error Info: NoDialTone

Delivery Date: 4/9/2024

Delivery Attempts: 3

Total Pages: 0

Transmit Time: 0 sec

Number Dialed: [REDACTED]

Effective August 1<sup>st</sup>, 2021 all faxes older than 90 days will be purged. Be sure to save any older faxes you need.

Delivered by [fax2u.net](#) powered by **Faxcore**

One attachment • Scanned by Gmail ⓘ

