

ACDI

EMPOWERING THE CHANNEL



2016, 2017, 2018 & 2019 Winner

BEST SOFTWARE & SERVICES PROVIDER

ACDI is a rapidly growing Professional Services Company that sells and supports dynamic software and hardware solutions. Since 1994, we have established ourselves as the print management industry leaders through unwavering hard work, quality products, and customer service that is second to none. Our teams of specialists understand the unique environments of each of the companies we serve. We listen to our dealers and partners and react swiftly to their needs, making ACDI the preferred turnkey solutions provider to the dealer channel.

As the leading distributor of PaperCut MF software in North America, our constant focus is to supply and support our dealer partners with PaperCut's print management software, which has helped over 60,000 organizations in over 100 countries manage their print costs and environmental impact.

While ACDI's flagship product is undoubtedly PaperCut MF, over the last two decades, we've also focused on diversification and innovation as two of our core values. Because of this, our portfolio of services and products also includes hardware payment solutions, proximity card readers, mobile print solutions, and document retrieval software. Combine our sales support with industry-leading project management, installation, marketing, and business development expertise, and you'll understand what makes us an indispensable partner.



“ACDI provides dealers with the greatest level of support in helping them sell their products and demonstrates a definitive unique understanding of and commitment to the dealer channel.”

- Frank Cannata,
CEO Cannata Report





Committed to Our Partners



PaperCut

2019 **ABOVE & BEYOND**
EXCELLENCE IN SUPPORT
OEM ENABLEMENT
COMMUNITY CARE

2017 **PINNACLE AWARD**
2016 **CUSTOMERS FIRST**
2014 **MOST DEALERS TRAINED**



PaperCut™

21%

Growth

Imaging

Industry

Growth

Rate: 7%

Source: IDC World Wide and U.S. Device and Print Management Market Share, 2018: Cloud Adoption and Workflow Integration Drive Growth

What we do



Pre-Sale Support

Trusted regional managers and solutions specialists collaborate with our partners to deliver precise results and achieve outstanding customer satisfaction.



Business Development

Identify and secure lucrative opportunities for long-term growth with our unparalleled industry expertise.



Marketing

Our marketing team creates compelling collateral and promotional materials proven to dazzle customers and boost sales.



Quotes and Orders

Our dedicated team of specialists helps you meet important deadlines, providing quick quotes, accurate orders, and timely licenses.



Project Management

Experience quality professional services from start to finish. Scheduled, managed, and tracked by our outstanding team of Project Coordinators.



Installation Services

Save time and effort with our professional software installation. Designed to maximize efficiency for all implementations from start to finish.



Integration

Deliver an enhanced experience with our top-of-the-line software integration and customization services.



Professional Services Support

Skilled software engineers implement high-quality solutions with ease - so you don't have to.

Business Development

DEALER ONBOARDING

SUCCESS PROGRAM

FREE TRIAL

CREATING PARTNERSHIPS OF VALUE.

acd-inc.com/forms/reseller-request

Onboard

The first step is to fill out the reseller request form. Once you're approved, the fun begins. ACDI's onboarding specialists will equip your dealership with all the necessary tools to guarantee success and drive profits.

Train

Our Business Development Representatives will make sure that your staff is expertly trained on ACDI's solutions. We give over 700 sales and technical presentations a year to keep you up-to-speed on solution updates, features and releases.

Deliver

We meet you where you are and take the guesswork out of solution selling. Whether it's training and marketing, or simply answering your questions, our subject matter experts are here for you.

Support

One of the most important words in our business. Once you make the sale, our Project management team takes over. Leveraging our installation and post-sale support experts to make sure you look like a superhero in front of your customer.

90 DAYS TO SUCCESS PROGRAM

At ACDI, we are committed to our reseller's success. That's why we've created this step-by-step program to successful solutions selling. As part of the onboarding process, your team will have a set of milestones to complete over 90 days. Dealerships that complete the program will be eligible for exclusive benefits like our Partner Perks reward card and other discounts and preferred services. Ask about our 90 Days to Success Program after becoming a certified ACDI solutions reseller.

40-Day Trial NFR Request Process



Request a 40-day/NFR trial from ACDI at:
acd-inc.com/forms/papercut-trial-request/

An ACDI trial expert will reach out to you by the end of the next business day to schedule the trial installation.

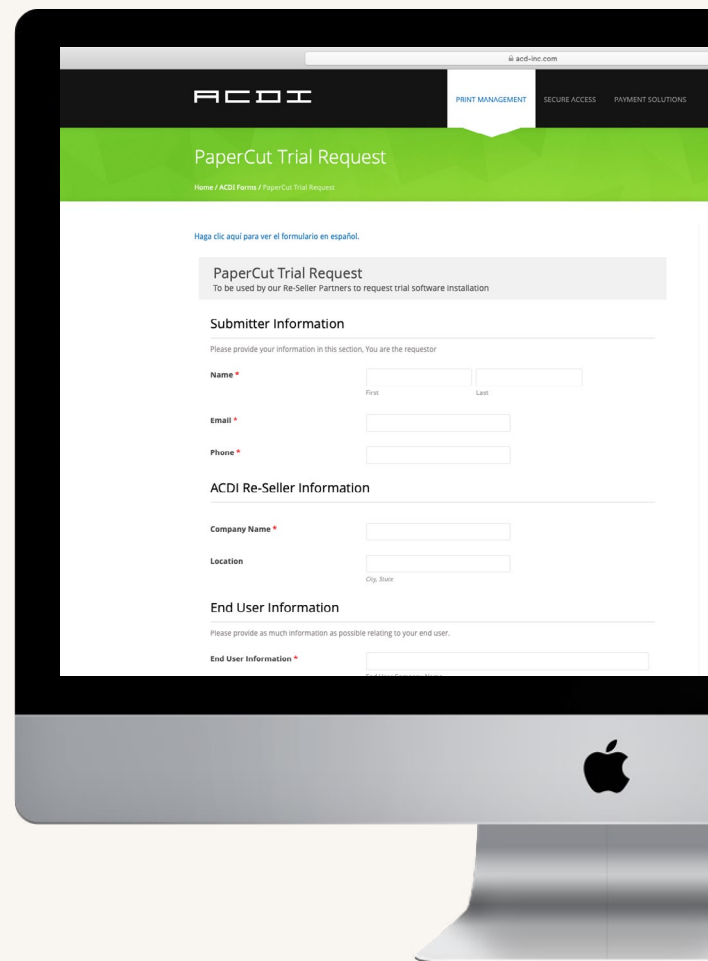
Once a date and time are agreed upon, the ACDI trials expert will send a WebEx invitation for installation.

The requested trial software and any applicable hardware will be installed remotely during this call by our ACDI trials expert.

The installation process usually lasts 90 minutes.

The dealer/end-user must have technical staff on-site for the duration of the software and hardware installation.

Once the software is installed, the ACDI trials expert will place a follow-up call to ensure the software is performing as expected.



✓ THE 40-DAY/NFR PAPER CUT TRIAL INCLUDES

- A fully-functioning version of PaperCut MF with unlimited users installed on one (1) print server
- Installation of PaperCut MF embedded software onto two (2) MFPs
- A tour, demonstration and light customization of the software
- Configuration of one (1) card reader per MFP

🧠 TECHNICAL SUPPORT

ACDI will provide technical software support for 40 days, or the duration of the trial, whichever happens first.

For support, contact an ACDI Trials Expert at trials@acd-inc.com

Post Sales Support

| MAINTENANCE & SUPPORT TERMS PAPER CUT TRAINING

Professional Services



DOWNLOAD COMPLETE DETAILS
<http://bit.ly/2vgKb1A>

EXPERIENCED PROFESSIONALS, IT'S WHAT SETS ACDI APART.

ACDI's Professional Services Division consists of multiple departments dedicated to serving the unique needs of your customers.

ACDI offers two support levels - **M&S and M&S PLUS - for end-users who have purchased** directly from an ACDI reseller. Support is entitled to the end-user of the specific product or software. End-user is defined as the individual or organization that purchases products and services through ACDI authorized resellers.

Project Management

- Dedicated Account Coordinators
- Prompt Installation Scheduling
- Single Point of Contact
- Available to Answer Any Install Questions
- Educates Implementation Team on Install Process
- Installation Quality Assurance & Customer Service

SUPPORT SERVICE ENTITLEMENT	M&S PLUS	M&S
Email support during normal business hours	✓	✓
Phone support during normal business hours	✓	✓
Real Time Support*	✓	✓
Server-side software upgrade assistance	✓	✗
Annual dashboard training	✓	✗
One time print data audit	✓	✗
Re-embedding MFD reset due to hardware failure**	✓	✗

* (On the spot assistance in most cases; however, during periods of heavy volume, responses will be processed within the time outlined in our SLA). ** (Hardware failure on the MFD is classified as any hardware component of the embedded device failing and, in the process of replacing the part, the device is re-initialized back to a factory state that requires the device to be reconfigured.)

Installation Services

- Implementation Experts
- Custom Software Configurations
- 3rd-Party System Integrations
- Software Training
- Functionality Assurance

Help Desk Support

- Courteous Phone and Email Support
- Hardware and Software Support
- Subject Matter Experts
- Industry-Standard Response Times
- Dynamic Support Ticket System
- Multi-lingual Support (English & Spanish)

QUALITY ASSURANCE
quality.assurance@acd-inc.com
 7 AM - 4 PM CST, M - F

SOFTWARE SUPPORT
 U.S. Toll Free 1.877.290.3327
software.support@acd-inc.com
 7 AM - 6 PM CST, M - F

ONLINE SUPPORT PORTAL
support.acd-inc.com
 Submit a support ticket 24/7

INSTALLATION SERVICES
installs@acd-inc.com
 7 AM - 6 PM CST, M - F

HARDWARE SUPPORT
hardware.support@acd-inc.com
 8 AM - 5 PM CST, M - F

LATAM SUPPORT
 877-290-3327
soporte@acd-inc.com

Support Portal: support.acd-inc.com



ACDI TRAINING

PaperCut MF Success

Features | Interactive | Demonstration | Experience | Hand-On | Expert

COLLABORATIVE | HANDS-ON | IN-DEPTH

PaperCut Training

DEALER TECHNICAL TRAINING

A 3-day course designed for those who are new to PaperCut or have some previous experience with installing, configuring, and troubleshooting the software. Learning objectives will focus on developing a complete understanding of an end-to-end PaperCut implementation and introducing advanced PaperCut techniques that will prepare trainees to attend a future Advanced Technical Training.

Best For: System engineers, pre-sales engineers, solutions consultants or any other technical staff that want an in-depth view into PaperCut MF from installation to configuration.

DEALER ADVANCED TECHNICAL TRAINING

This rigorous course is designed for PaperCut-Certified professionals who wish to become experts at implementing PaperCut in a wide variety of end-user environments. This audience will need to have all the skills taught in the Technical Training plus experience with DB-Tools, command-line entries, and Windows/Mac/Linux-based printing.

Best For: Experienced system engineers, pre-sales engineers, solutions consultants and other technical staff who have installed, configured, and supported PaperCut in a wide variety of end-user environments.

“This has actually been the best training I’ve ever done. Best trainers, best hospitality.”

- ORALONDO SOLOMON
SHARP BUSINESS SYSTEMS



OVERALL EXPERIENCE

“ACDI is awesome, their support is awesome. They treat you like family.”

- DOUG MURPHY
CAROLINA OFFICE SYSTEMS



WOULD RECOMMEND



For more information visit:
www.acdi-inc.com/training

SESSIONS

Technical

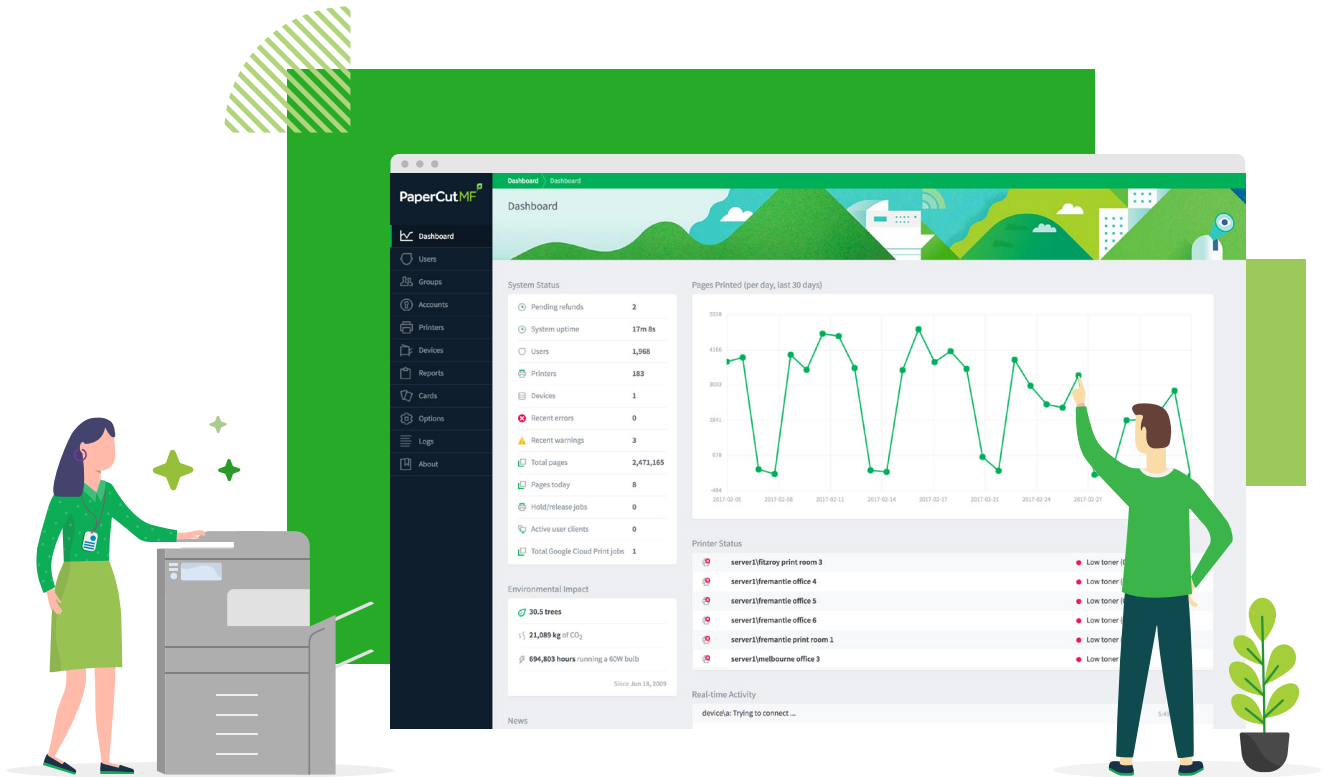
- Orientation
- PaperCut Infrastructure
- PaperCut Web Dashboard
- Site Servers, Direct Print Client
- Embedding Devices
- Find-Me Printing
- Linux/macOS
- Shared Accounts and Quota's
- Print Deploy
- Job Ticketing
- Mobile Print Options
- Integrated Scanning

Advanced Technical

- Orientation
- Linux
- PaperCut Enterprise Infrastructures
- CUPS
- AS400
- PaperCut Advanced
- Backups & Database migrations
- Mobility Print with Advanced DNS
- ACDI Integration Services
- System Health Monitoring
- Advanced Scripting
- Integrated Scanning
- Advanced Troubleshooting Techniques
- Hardware
- Print Deploy
- Job Ticketing

Solutions

| PAPER CUT MF KPAX ACDI HARDWARE STORYBOARD CLOUD SERVICES SCANSHARE MYPC



A HIGH-LEVEL FEATURE GUIDE FOR CUSTOMERS

Complete **visibility and control** of your print environment

A powerful print management solution to enable, track, manage, and secure your printing, copying, and scanning.

QRDOC.IO



v1.0

It doesn't matter what size you are, what printers you use, or what operating system your users prefer – PaperCut MF is for you.

That's because we take a cross-platform, vendor-neutral approach to technology and device support to deliver a print management solution that just works.



With PaperCut MF you can:



Manage your print environment



Save money and the planet



Secure your printing



Integrate with third-party systems



Manage 3D printing and Print Rooms



Give users power



Digitize documents

Manage your print environment

Web-based admin dashboard

PaperCut MF provides built-in, browser-based administration access from any network location to enable centralized management of every user and printing device.

[The dashboard](#) gives an easy-to-read, single-page view of the printing environment in real time, including system activity, printer error notifications, toner levels, trend information and statistics – even environmental impact. You can designate automatic quotas, deploy print queues in bulk, enable language options, and apply many more features in the pages to come.

User sync

PaperCut MF synchronizes user and group information from sources such as Windows Active Directory, Google Cloud Directory, Azure Active Directory and LDAP. This simplifies the administration of the system because you don't need to manage a separate database of users and groups.

If a user is added to the domain or is removed from a group, PaperCut automatically synchronizes this information without any intervention from the administrator. And don't worry: you can mix and match multiple sync sources for ultimate flexibility.

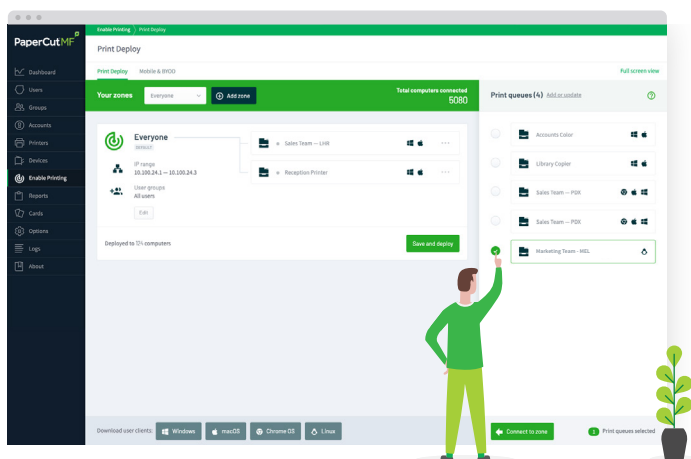
Print Deploy

PaperCut's Print Deploy feature is an innovative print queue deployment tool, allowing you to get the right print driver and right queue to the right person in the right location, automatically.

Print Deploy automates the time consuming, frustrating tasks of setting up print queues and deploying print drivers on computers in your network. Once a user leaves a site, it removes the queue and driver automatically, so clean up is a breeze.

With Print Deploy, you'll:

- ▶ Save time by deploying print queues and drivers easily at scale
- ▶ Maintain flexibility with a tool that supports environments with or without a print server
- ▶ Reduce support tickets with an automated printer configuration that's no touch for end users, even as they move between sites
- ▶ Save money on maintaining and supporting an on-premise Active Directory just to support printing
- ▶ Increase end-user productivity with automated setup and printing that just works
- ▶ Remove risk because it's from an organization with 20 years' experience in print management



Mobile printing and BYOD

Your team wants to work on the device they're most comfortable with – laptop, tablet, or smartphone; running iOS, Android, Chrome OS, Microsoft Windows or macOS – and PaperCut supports them all with its [BYOD](#) (Bring Your Own Device) features.



[Mobility Print](#) is the flagship solution for mobile printing and BYOD, enabling millions of users to easily print from their devices, with a native print experience from any application. It takes away the complexities when working across different operating systems, file formats, and brands.

Additionally, the [Web Print](#) option gives users easy access to print Microsoft Office, PDF, and image files directly from the browser, even when they're not on site or connected to the local print network. Combine this with [Email to Print](#), and users have the option to email their jobs to an address you create (e.g. printme@organization.net), and their documents will print at an authorized printer within your environment, making guest printing as easy as PaperCut.



Save money and the planet

Reporting

PaperCut MF includes over 80 one-click [reports](#) available for online viewing, export, or print. Reports address all areas, from detailed page logs to summaries by user, department, device, and environmental impact.

Administrators can also build custom reports to make sure they're delivering the most applicable data; and all these reports can be emailed to specific people on a regular schedule, removing any manual efforts.

Print policies

Implementing a print policy isn't just about sending people an email with a list of rules to follow; a great policy is automated through a system. Enter PaperCut MF.

[Print policies](#) allow you to track and control printing and copying based on users, department, class, or client. Start out lightly by suggesting environmentally friendly printing options like double-sided or grayscale printing, or add firm rules to restrict behavior and reduce waste.

Advanced scripting

[Advanced scripting](#) can be used to define and fine-tune your print and copy policies, and support your organization in eliminating waste and changing user behavior.

With advanced scripting, you can:

- ▶ Route complex jobs to more efficient, high volume printers

- ▶ Display a pop-up message if a user forgets to select duplex or grayscale

- ▶ Restrict users' functionality (e.g. after hours)

- ▶ Allow free printing on schedules (e.g. during class or workshop times)

- ▶ Give discounts during off-peak times

- ▶ And much more...

Cost recovery

Want a bigger impact than just applying policies? Designate different [costs for print settings](#), such as color versus grayscale, single-sided versus duplex, and printer P versus printer C.

User pay-for-print

Set users or groups up with [quotas](#) by applying credit to their account. This can be a recurring allocation per semester, quarter, month, or hour – or even implement a “use it or lose it” policy.

Integrate with one of many third-party payment gateways – such as PayPal, Authorize.Net, RBS WorldPay and CyberSource – to enable users to transfer balance directly from their bank to their PaperCut account.

Or give users quick and easy print credit by using [prepaid/top-up cards](#). Create a bulk batch and distribute them to different department heads, or offer them in a vending machine. A user buys a card, enters the unique code into their PaperCut UI, and ta-da: they're ready to print!



Client Billing

Are you printing in a business that would like to bill costs back to a client or project? That's easy with PaperCut MF's [Client Billing](#). Every time a job is initiated, select the appropriate account and the charge will be applied to their balance, making tracking and invoicing simple and precise.

To make things extra easy, PaperCut integrates with a variety of third-party legal and accounting systems so you don't even need to change your existing setup to start feeding data through.

Secure your printing

End-to-end encryption

PaperCut MF supports end-to-end encryption on the network. That means not just security at the printer, but from the user's device to the print server, the print server to the printer, and the printer to the user's hand. They're protected at every stage, from "I want to print this," to "I've printed this, now it's time for coffee."

User authentication

To avoid mix-ups with balance allocations and document handling, PaperCut MF requires users to authenticate at the MFD with a variety of login options. Enter a unique ID, username with a correlated password or pin, scan an ID card or badge, or integrate with biometric hardware for the most secure level of identification.

Card numbers can easily be extracted from your network's user directory or a database (e.g. door access control system), or users can self-associate their card on first use.

Watermarking and digital signatures

[Watermarking](#) automatically adds a username, timestamp, digital signature, or other metadata to every printed page. It's a fantastic mechanism to improve behavior in your organization – when users see that printed documents can be traced back to them, it's much less likely they'll let sensitive documents lie around the office.



Secure Print Release

[Secure Print Release](#) increases document security and reduces wasteful, uncollected print jobs. All print jobs sit in a holding state until the user walks up to the multi function device (MFD), logs in, and approves its release. This avoids confidential documents sitting on the paper tray until users can make their way to the MFD, or if a user forgets they pressed "print" at all.



Find-Me Printing

Adding convenience to the already secure mix, [Find-Me Printing](#) saves users from needing to choose what printer they'd like their job sent to. They can print to the shared Find-Me queue, then simply walk up to any printer they like, authenticate, and safely release their job under their strict supervision.

With Find-Me Printing, you'll:

- ▶ Reduce the need for IT administrators to manage multiple print drivers and queues
- ▶ Reduce waste by up to 20% in busy office environments
- ▶ Minimize inconvenience when printers are in error by letting users easily select another

Print archiving

[Print archiving](#) empowers administrators to browse and review the content of print activity in their environment. Alongside the powerful tracking and reporting functionality built into PaperCut MF, this gives administrators a wide range of auditing functions.

Integrate with third-party systems

System integrations

PaperCut has one of the biggest collections of [third-party integrations](#) around, making it as easy as possible to amp up your existing business structure with the added support of PaperCut MF.

You can connect with:

- ▶ Payment gateways

- ▶ Accounting systems

- ▶ Legal practice management software

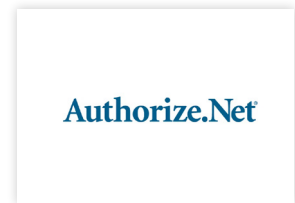
- ▶ Coworking management software

- ▶ And many more...

Payment gateways

PaperCut MF plays nicely with leading [payment providers](#) – like PayPal, Authorize.Net, RBS WorldPay or CyberSource – to enable real-time, online payments via credit card. It also supports closed or internal payment systems like college fund accounts.

Hardware gateways are available to support a range of cash loaders, self-service kiosks, and bill and coin boxes. For hardware, please reach out to a PaperCut [Authorized Solution Center](#) (ASC).



Manage 3D printing and Print Rooms

3D printing

Managing a [3D print](#) environment? PaperCut MF streamlines the process for everyone. For users, it's enabling them to submit complete job requests and track their progress. For operators? It's giving them the tools to stay on top of orders they need to process, and even communicate with users. It also gets more people using all that great equipment you've invested in!

You're covered for more than 3D printing, too. Services on CNC machines, laser cutters, or any other equipment your lab offers can all be set up. And since it's PaperCut, you can also allocate users' costs to their traditional printing quotas, and run consistent reporting.

Print Rooms

By tracking and managing all activity, PaperCut MF does away with pesky [Print Room](#) problems. No more easily lost email and paper forms, no more charging and quoting across multiple departments, no more frustration.

From when the user submits a job ticket, to when the print room operator reviews, tracks, and completes the project, PaperCut's end-to-end workflow tool keeps things moving along smoothly and efficiently.

You also get the same consistent reporting and cost-allocation convenience available with PaperCut MF.

Give users power

Control at the MFD

Monitor and control all actions directly on your MFD: print, copy, scan, and fax.

With PaperCut MF, users have power at the device to:

- ▶ Authenticate with username and password, pin, or card swipe

- ▶ Select specific jobs to release or delete

- ▶ Allocate jobs to a personal or shared account

- ▶ Change print settings, including color versus black and white, single-sided versus duplex, or quantity of copies

- ▶ Select scan destinations like email, folder, Google Drive, SharePoint Online, or many more

- ▶ View account balance

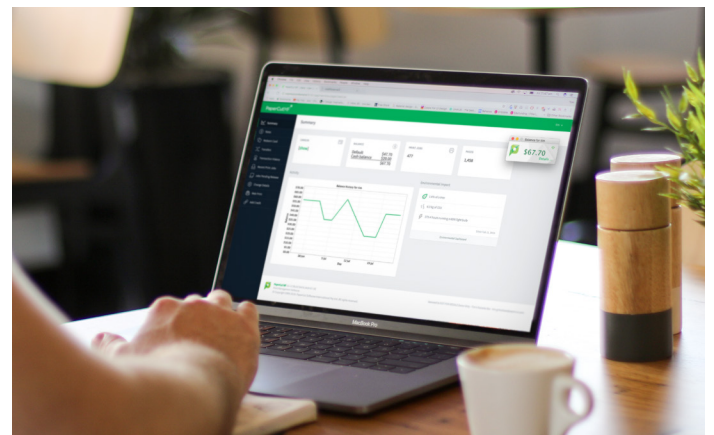
- ▶ Select what language the device displays in

And because PaperCut's vendor-neutral, users get that familiar experience on the MFD panel – no matter which printer they go for.



Control from computer, tablet or smartphone

End users have access to a set of web tools to track their activity, check or add to their account balance, and view prior transactions without administrator assistance. Users can even choose from 30 languages when interacting on the PaperCut [web interface](#). Want to brand the users' interface? No problem! Choose custom colors, logos, and messaging to support your organization's spirit.



The [User Client](#) is a pop-up window that allows users to easily view their current account balance, or allocate their print job to a desired personal or shared account. It can also do plenty more to streamline printing and help organizations reduce waste, like:

- ▶ Provide a final notification to confirm what's about to be printed

- ▶ Display system messages like low credit warnings or print policy reminders

- ▶ Show users their impact on the planet - measured in trees, carbon, and energy - with the [environmental widget](#)

Digitize documents

Create smart, searchable documents

With Scan Actions applied, users can convert hard documents into digital masterpieces with just a couple clicks. PaperCut's [Integrated Scanning](#) empowers you to set up scan workflows by user or group, with their settings and scan destinations following them to any compatible MFD in real time.

With [OCR](#) (optical character recognition), you can turn unlimited scans into text-searchable and editable smart documents to retrieve information easier than ever. PaperCut MF's one-click OCR works right out of the box for all kinds of workplaces, and depending on your organization's needs, you can process these intelligent files either in the cloud or locally on site.

Scan to Email and Folders

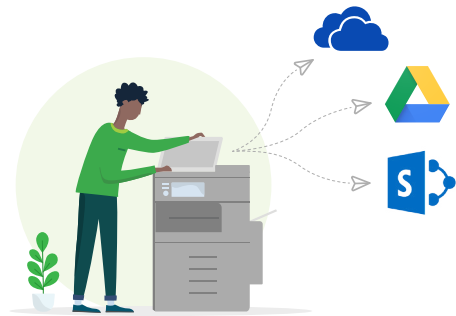
With PaperCut MF, users can quickly scan documents directly to their email account, or to pre-configured personal and network folders with just one click. Files will no longer go to one unorganized "Scanned Documents" folder, causing users to waste time searching for documents.

Scan to Cloud Storage

[Scan to Cloud Storage](#) takes your scans and sends them to the cloud storage service of your choice, like Google Drive, OneDrive, SharePoint Online, Dropbox, and many others. Administrators select which destinations users can access and are able to audit all actions.

But is it secure? Of course! All scan jobs and data are encrypted with signed certificates and transmitted over HTTPS, following industry best practices for security.

Quick and easy to set up with a one-time authorization, Scan to Cloud Storage requires minimal support and gives users a friendly tap-and-scan workflow. Reducing the extra steps at the MFD means users waste less time.

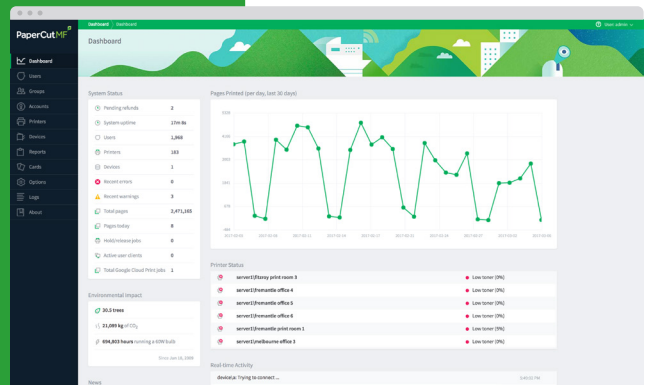


Get it now

Request a quote:
www.acd-inc.com/forms/quote

Become a reseller:
www.acd-inc.com/forms/reseller-request

Get a trial:
www.acd-inc.com/forms/papercut-trial-request



Contact us

sales@acd-inc.com
acd-inc.com



KPAX reinvents the management of printer and multifunctional copiers

A centralized fleet management solution for multi-brand office printing and copying hardware. From a single interface, you can access MFP device information regardless of the number of sites, the number of customers, or the number of machines. KPAX optimizes the management of your MPS program to reduce the fleet's operating costs, improve service quality and develop new revenue opportunities.

More than
650K
devices managed



Customize your plan based on your needs.

When you apply a profile to one or more devices, then the Koins are consumed and recorded in the current month. The features are activated for a period of 30 days and are automatically renewed without any action on your part. Of course, you can mix several profiles in the same space!

To enable features on a device, create or use default profiles:	
Ignore/unmanaged » profile (default)	0
Managed/mps » profile (meters + consumables + technique)	ⓀⓀⓀ
Monitor the competition » profile (meters)	Ⓚ
Deliver only consumables » profile (consumables)	Ⓚ
Read only the meters » profile (meters)	Ⓚ

BILLING

Automatic meter reading and feedback Reduce time spent obtaining information to bill
Improve the quality of billing data

TECHNICAL MANAGEMENT

Diagnose before sending a technician
Send the technician with the right part
Limit and optimize the technician's movements

CONSUMABLES

Automate delivery triggering
Reduce customer cartridge inventories (CPP contracts)
Limit early cartridge replacement

SALES

Statistics & customized reports
Develop sales opportunities
Identify necessary changes within the fleet
Detect business opportunities



Watch the video or visit: info.acd-inc.com/kpax



LIBERTY SIMPLIFIES DATA COLLECTION

Liberty allows you to simplify the implementation and maintenance of agents in poorly adapted client environments. The Liberty stand-alone box reduces the time technicians spend managing collection agents.

KPAx Liberty is installed on the customer's network

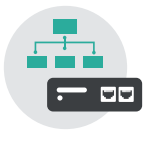
Only one Liberty per client network is required, regardless of the number of devices to be managed.

PoE - Power over Ethernet available (Network must support PoE)

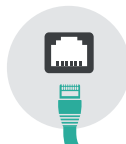
- No Power adapter needed
- Data + Power in one cable
- Good for environments that support PoE and don't want to use up an electrical outlet.



Low power supply consumption



Ethernet switch 100Mbit/s



RJ45 connectivity



Integrated WIFI chip



SOFTWARE DATA COLLECTOR

Is installed on a Windows environment (preferably server or user workstation) with connectivity to the printing systems and it runs 24 hours a day, 7 days a week, in a closed session.

WEB ACCESS PORTAL

Liberty allows you to simplify the implementation and maintenance of agents in poorly adapted client environments (no server, no workstation control, low IT competence, Mac environment...).

THIRD-PARTY INTEGRATION

KPAx is the most versatile fleet management solution on the market today. It was created "by design" to integrate with today's popular third-party software applications.

KPAx WIKI

A community database of printers and MFD references linked to our online servers. It Allows us to globally enhance our solution with a better understanding of printer compatibilities.

Cost Recovery: Pay for Print



DID YOU KNOW?

You can buy your Prox Cards & Readers directly from ACDI? We are one of the largest distributors of RFIdeas Prox card readers in North America. Because of our volume discount, we can often times supply you with the readers you need cheaper than buying directly from the manufacturer.

ACDI CARD READERS & PAYMENT SOLUTIONS

Manufactured and designed in-house with technology that's second to none, the popular EX2000 Series allows multiple price lines for fine-tuned pricing. Charge different rates for black and white and color copies, various paper sizes, simplex, duplex, and more. But it's not just for copies. Charge for prints, scans, and faxes too!

The EX 2000 Series is the most reliable and aesthetically pleasing unit on the market today. With its unmatched functionality, it is the solution for all your print and copy needs. Printing reports has never been easier. They're compatible with most copiers on the market today. Control your overhead by reducing your paper and equipment costs with the EX2000.

RSX1000 Print Release Station

Web-enabled print release station/payment solutions designed to provide access to PaperCut hold and release queues while streamlining money management in an account-based environment.



MOBILE-FRIENDLY PAYMENT SOLUTIONS

Our entire line of ACDI credit card payment solutions now accepts Android, Apple, and Samsung Pay. It's never been easier to pay from your phone.



For more information visit:
www.acdi-inc.com/hardwarepaymentsolutions

IdentiD
BIOMETRIC ACCESS POINT

ACDI

Multi-factor Authentication with One Touch



If you need a secure and reliable biometric solution for your multifunction printers, IdentiD is at your fingertips. With just one touch, confidently control access to your documents and devices using innovative fingerprint scanning technology.

The sleek, compact design of IdentiD Biometric Access Point enables seamless multi-factor authentication without adding clunky and expensive hardware. Simply connect the USB cable to an MFP and you're ready to go.

Integrated with  **PaperCut**
MF

NEW

Version 2 now with 

- Seamless integration with PaperCut MF
- Secure, multi-factor authentication through fingerprint
- Simple and quick self-registration or back office registration
- Easy installation of plug-and-play style reader
- Compact size with USB or Wi-Fi connection to the MFD
- Compatible with a range of popular devices and versatile for small to large-scaled organizations



SECURE



RELIABLE

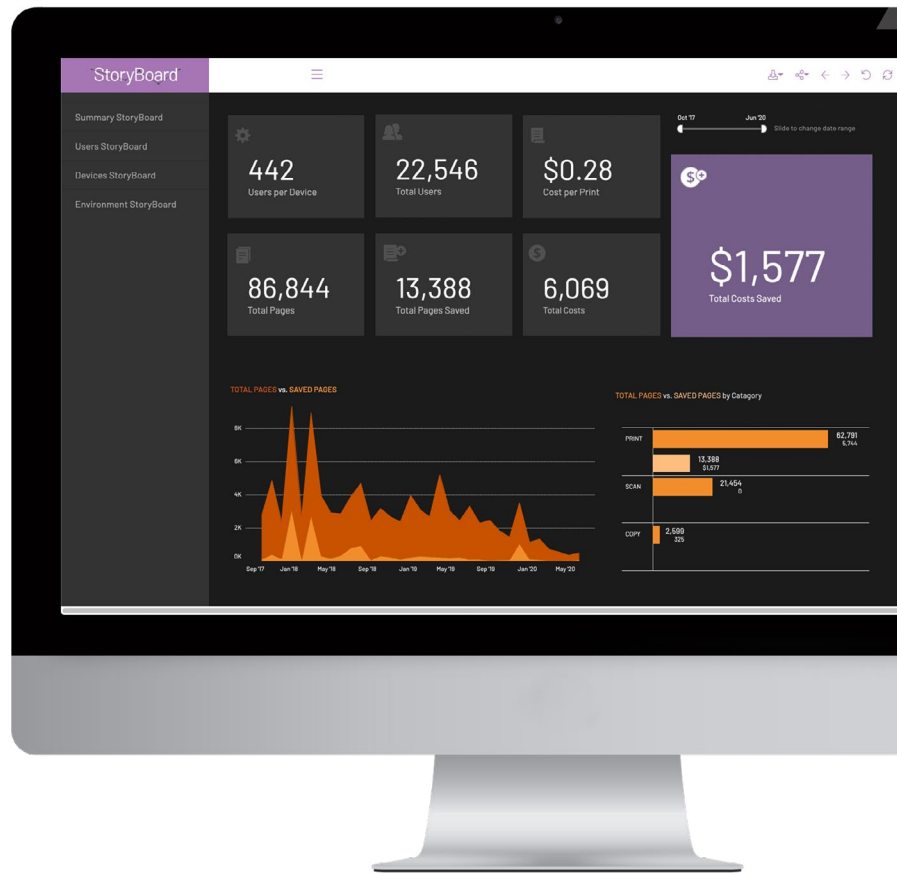


ACCURATE

Storyboard

Turn Your Data Into Actionable, Visual Business Intelligence.

Storyboard is a powerful platform for better productivity in your business. View real-time data in a way that's easy to digest so you can take action. Easily create a customizable, interactive dashboard to track company KPIs, departmental goals, project milestones, and more. Reach deep into every facet of your operations and get meaningful business intelligence.



Audience – Target Market/Customer

- Customizable dashboards showing you exactly what you want to see
- Data brought in from multiple sources, giving you a single source of truth
- A dedicated analyst to help you understand
- Use your data to make better decisions
- Cloud-based service, no need for setting up any infrastructure

Business Benefit

- Enterprise clients looking to augment their existing data teams
- Midsize companies looking to implement analytics or replace an ineffective solution
- SMBs looking to implement analytics for the first time to make better decisions

We connect to 200+ cloud and desktop software suites.
Because when all your data comes together, it's a beautiful story!

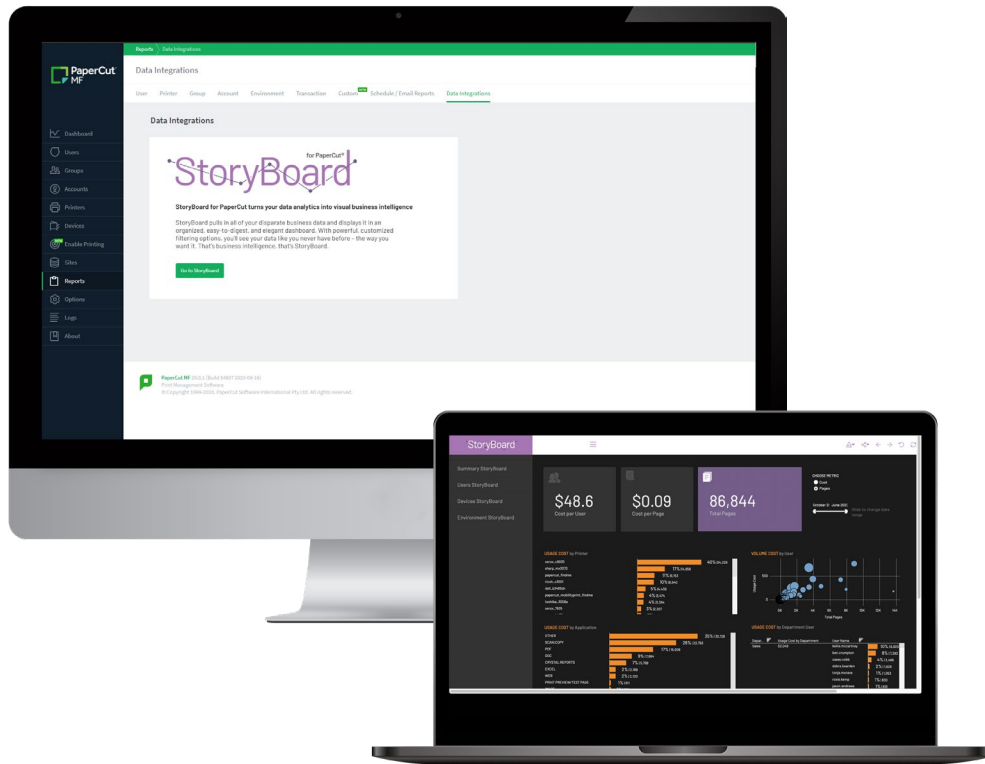


Storyboard Add-Ons for Common Software Suites



INTRODUCING

Storyboard[®] for PaperCut[®]



Advanced Insights and Analytics for PaperCut Data

All the StoryBoard analytics and insights designed specifically for the best print management software in the land, PaperCut.

Launch StoryBoard directly from the Integrations tab inside of the PaperCut 20 dashboard.

No need setup those PaperCut reports. StoryBoard gives you instant, real-time visualizations of your PaperCut installation.

With infinite ways to click and drill-down in your data, the advanced comparison and benchmarking analytics will tell you the real story.

Set up StoryBoards for individual customers and rock your next QBR!

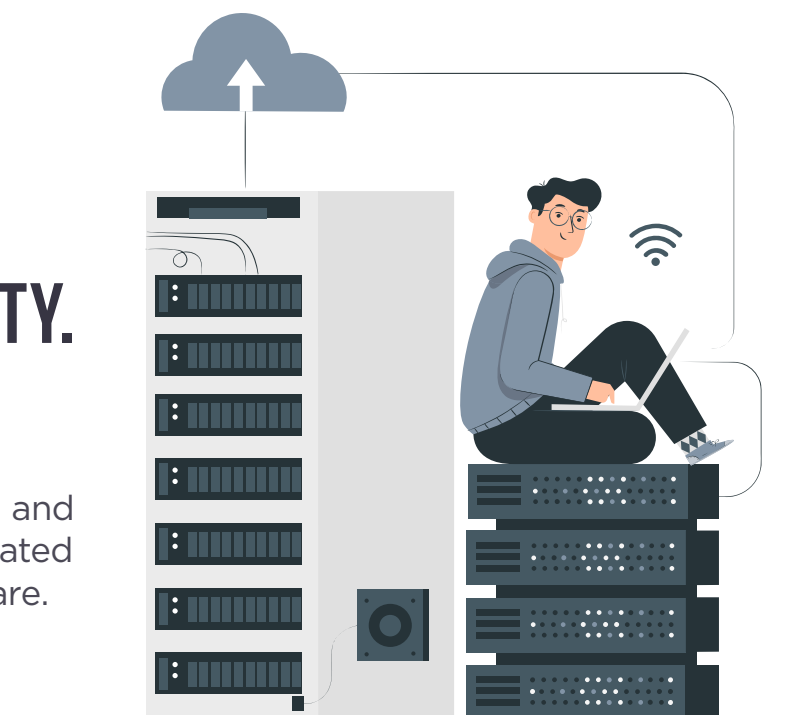
Oh, and in true PaperCut fashion, an environmental dashboard based on user habits. Very earthy!



RELIABILITY. AVAILABILITY. SCALABILITY. SECURITY.

Move PaperCut MF to the ACDI cloud and say goodbye to the headaches associated with on-premise hardware and software.

Let ACDI take care of everything.



ACDI CLOUD SOLUTIONS

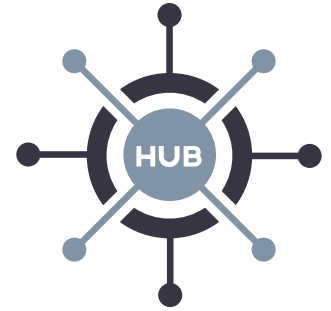
PaperCut from Start to Finish.

PaperCut MF, the industry-leading Print Management software, has been cloud-ready for many years and works flawlessly utilizing the latest cloud and hybrid cloud technology advantages.

Advantages of PaperCut MF on a private cloud

- Immediate Time to Value - Start using your software almost instantly
- Upgrade to the latest version of PaperCut software or integrate new features in record time
- No server hardware/software investment
- ACDI Professional services can customize and configuration your PaperCut software based on your organization's needs
- PaaS (Platform as a Service) is a complete environment in the cloud, with resources enabling cloud-based apps to sophisticated, cloud-enabled enterprise applications
- All IT services are included
- Preemptive app monitoring and problem resolution
- ACDI analytics empowers you with actionable knowledge to ensure your software and employees are operating in the most efficient manner possible

Minimize risk and speed project deliverables with ACDI, a PaperCut Private Cloud Certified Partner.



Certification ensures that we have the expertise and skill to implement or migrate your locally hosted print management to Private Cloud architecture.

Private Cloud Certified Partners are:

- Fully endorsed by PaperCut to match your Private Cloud solution to your organization's needs
- Have access to PaperCut tools, training, and support
- Understand your perspective to deliver the best print management architecture outcome

CLOUD SOLUTION PLANS

Hosting Plans Designed for Each Step of the Way

Traditionally, businesses have to build and maintain infrastructure to run on-premise applications. With the Platform as a Service (SaaS) model, businesses can consume applications, like PaperCut, hosted online. The hosted model allows for lower costs, seamless upgrades in functionality, and integration with existing data and systems.



**ACDI Cloud Solutions Hosting Plans are sold separately from PaperCut Software device licenses and support.

FEATURES

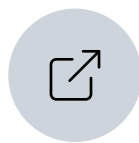
Why a Private Cloud?



Flexibility



Security



Scalability



Agility

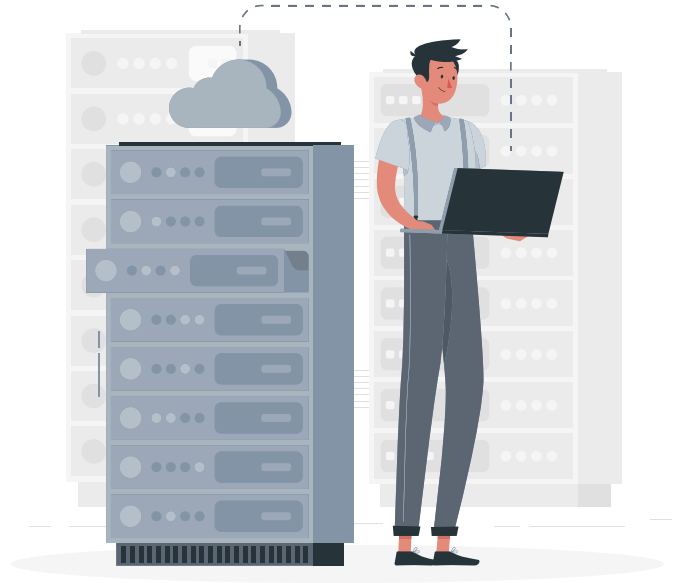


Performance

ACDI MIGRATION SERVICES

Have an existing on-premise installation? No problem.

If you currently have an existing on-premise installation of PaperCut but want to take advantage of the availability, flexibility, and security of today's cloud platforms - ACDI's got you covered. Our Professional Service Engineers are experts in migrating your on-premises installations to the ACDI Private Cloud.



Discover the Benefits of Cloud Hosting.

Easy to Scale Server Resources

With cloud hosting scaling your server resources couldn't be easier. For most cloud servers, you'll have access to an intuitive site management dashboard that lets you view your site's performance in real-time.

Ultra-High Uptime and Availability

Cloud hosting has high uptime built-in. Since your apps will be virtually using multiple servers' resources, you can simply be transferred to another server if one goes offline or is experiencing technical issues.

Safety From Server Hardware Issues

Your site is isolated from any physical server issues with cloud hosting, including hacking, hardware failure, or system overload. ACDI's Cloud Hosting utilizes the highest encryption available on the market today.

Works Great for Scalable Traffic

If your user volumes are scaling with cloud hosting, you can quickly increase your server resources on an as-needed basis. It's challenging to find this level of scalability with any other style of hosting.

Redundant Server Environment

With redundant hosting, a backup will take over your existing applications within seconds if a failure should occur. With cloud hosting, you'll have a concurrent live version of your apps that your host can load immediately.

Speedy Server and Setup Process

You can deploy a cloud server in record time. We're sure it's the same in your organization - time is money. That's why speed counts. With ACDI Cloud Hosting, you will realize an immediate time to value.

Faster Website Speed and Performance

Most cloud servers offer you blazing fast speeds. Cloud hosting also allows for easier load balancing between multiple server environments, which can put much less strain on a single server's resources.

Decrease Your Overall Environmental Impact

If you're a company that's concerned about its environmental impact, then cloud hosting is what you're looking for. With cloud hosting, you're utilizing fewer data centers and only the resources you require.

Have some questions? We love to talk, just ask us!

One-third of businesses are adopting the cloud because they can access information through multiple devices.

ACDI

800.990.2234

info.acdi-inc.com/cloudservices



Take your workflows automation to the next level.

Improve your business productivity and efficiency

Scanshare Capture is a powerful yet easy-to-use solution that lets you integrate your paper-based workflows, inbound emails, and faxes to your document management systems, databases, corporate file servers, and content management applications.

CAPTURE

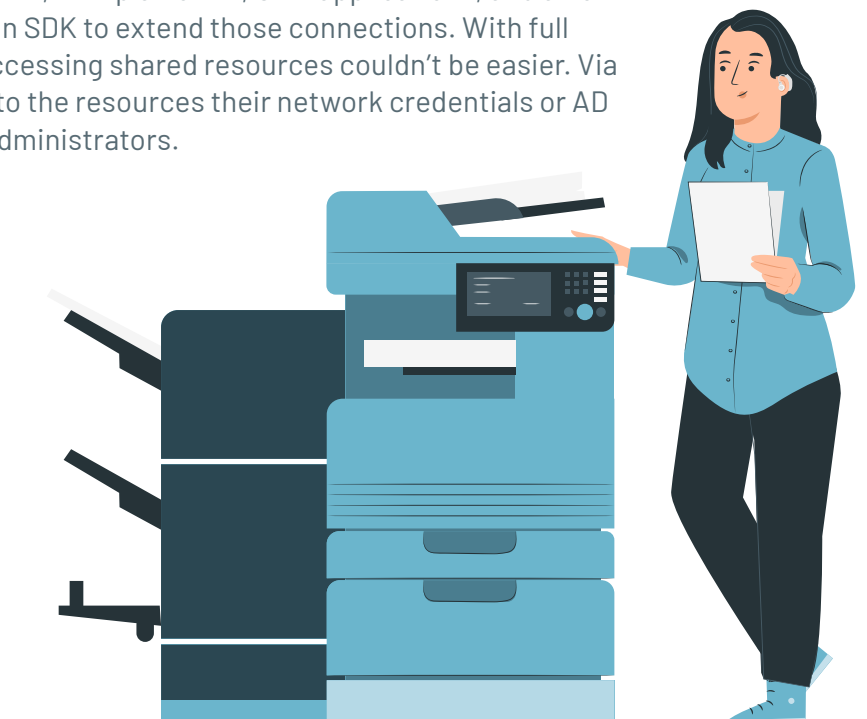
Capture and convert your paper documents using your office multifunctional device (with apps for most popular brands) via the Scanshare Capture embedded client. By answering questions and making decisions at the multifunctional panel, document metadata can be used to route and store the data in the correct place. The PC capture client can drive dedicated scanning devices or import existing electronic documents. Scanshare Capture can also monitor, analyze, process inbound email and attachments from multiple email addresses, and integrate with other applications web services to receive data.

PROCESS

Process your documents: Scanshare Capture offers an intelligent barcode detection and separation function in addition to smart page splitting, enabling you to capture multiple pages but store each page separately. Zonal character recognition enables the extraction of specific information from the document by analyzing specific zones. This information may be used to route, rename, or store the document in a specific location. Workflow triggers are activated when processing conditions are met (for example, a specific client name, invoice value, document type or content, number of pages etc.), and dynamic decisions are made on the processing routes. Custom notifications can be raised with specific users and groups, alerting them to documents that require attention. And advanced scripting means a solution can be created for any situation.

STORE

Store your document to various locations, including our own file repository, plus a large selection of 3rd party applications. Scanshare Capture's connector library supports many popular global document management systems, ERP platforms, CRM applications, and a host of cloud-based file storage platforms, with an SDK to extend those connections. With full integration to Active Directory and OAuth, accessing shared resources couldn't be easier. Via their single sign-on, users only have access to the resources their network credentials or AD group permits, making it easier for system administrators.



KEY FEATURES

CAPTURE V5

Capture Sources

- Multifunction devices
- iOS/Android smart phones
- Network/local scanning devices
- Email (SMTP, POP3, IMAP, Exchange and Office365)
- Local, remote or network folders
- FTP sites
- PC desktop client
- Printer client
- Web services

Processing Modules

- Full text recognition
- Zonal and Smart text recognition
- Intelligent Character Recognition (handwriting)
- Automatic FreeForm recognition
- Optical Mark Recognition (OMR)
- Interactive document verification and approval web module
- Intelligent document recognition
- Image enhancement
- Barcode recognition (1D/2D)
- Encryption/Decryption
- Document annotations (including stamping and security redaction)

Storage Connectors:

- Network Folders
- Cloud storage providers, including Microsoft®, Google®, Box®, Dropbox®, Citrix®
- Dozens of content and document management system connectors
- Email
- Printing devices
- ODBC-compliant databases
- Structured output (CSV, XML etc.)
- Embedded document storage module with web/mobile UI

Enterprise Features:

- Accounting and billing
- Centralized, HTML5-compliant administrator user interface
- Digital signature module (digital signatures may be applied to PDF documents during processing)
- Military-grade encrypted storage
- Clustering and load balancing
- Authentication services (MFD Single Sign On, Windows, Active Directory, LDAP, Azure, G Suite, OAuth)

ACDI

403 North Main Street
Benton, AR 72015
800.990.2234 | acd-inc.com