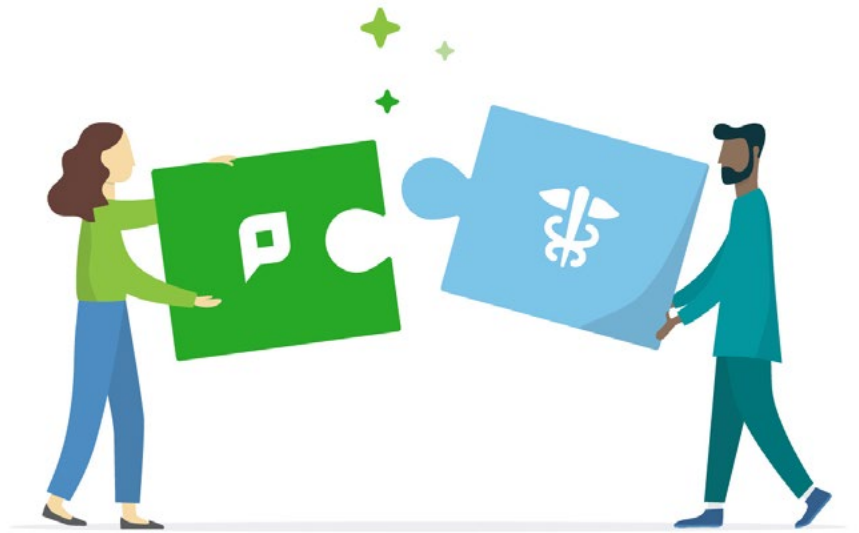




# EPIC/EMR Integration



## Epic integration with PaperCut Epic app

### WHAT IS IT?

It's a special app that's been co-engineered by PaperCut and Epic development. Used with Epic print systems to capture user credentials and provide secure print release and find-me printing as well as all other PaperCut features like Print Deploy and Mobility Print.

### WHAT IT DOES?

The app is installed on a Windows print spooler so it can intercept the jobs and identify who they belong to. It is used in conjunction with a print provider from PaperCut on the same print server.

### WHAT IT INTEGRATES WITH?

This app integrates with any Epic version 2018 or greater while the version of PaperCut MF must be 17.1 or greater because it utilizes Mobility print in the background.

### TARGET AUDIENCE?

Healthcare systems running Epic v2018 or greater will be able to take advantage of the app.

### HOW WILL IT BE PRICED?

Pricing is based on a per-server methodology. Any external print server hosted by the same EPS (Epic Print System) will need to have the app installed, priced per app. The app is in the Epic Orchard Gallery however purchased through ACDI.

### HOW WILL IT BE SUPPORTED?

ACDI pre-sales Solution Architects are up to speed on the app and can obtain a trial of the app if required. The Epic integration app is not included in a "normal" trial license. Support will be provided by ACDI Professional Services.

## Healthcare Market challenges

- Compliance
- Health Insurance Portability and Accountability Act (HIPAA)
- Data Protection Act (UK)
- The Privacy Act (AU)

## PaperCut Solutions

### Official integrations

- **Epic** - PaperCut is now available on Epic's App Orchard gallery.
- **Cerner** - PaperCut MF works out of the box with Cerner - with some caveats around having the correct resources available for implementation. For Cerner to work properly it involves redirecting the native CUPS printing from Cerner to another print server, there may be the need to inject the user name into the print string so we can do secure/find-me printing.
- **Others** - There are many examples of Papercut working in EMR environments. ACDI has performed integrations into Meditech and Athena.

General Release, introduced in V20.0  
**TO SEE FULL RELEASE NOTES, VISIT**  
<http://info.acd-inc.com/pc20>

